

DS One
Vacances

Camping Prairies de la Mer

All the DS ONE VACANCES team is dedicated to your holiday enjoyment.

We are delighted to announce our partnership between BJ Riviera Holidays and Marino Mobilhomes to create the DSOne Vacances group. Our office is situated at the emplacement n°1761.

Our Mobile homes are located on Prairies de la Mer, one of the premier camping parks of the Cote d'Azur in the heart of the bay of Saint Tropez. Only a stroll away from the beautiful Port Grimaud, The Riviera's little Venice.

Let yourself be tempted by a stay in the south of France on a beachside camp site.





Village dedicated to your holiday experience...

Facilities on site

- 2 Supermarkets
- Bakers
- Laundry
- Newsagents
- Carrousel
- Mini fair ground
- Ice cream parlours
- Mini markets
- Hairdressers
- Excursions office
- Restaurants
- Fast food services for all tastes
- Spa

Activites for all the family

- Archery
- Beach volleyball
- Gym Aquagym
- Table tennis
- Tennis courts
- Mini tournaments
- Kids club
- Scooters & Bicycles to rent
- Football pitch
- Fitness room
- Introduction to horseback riding

From the beach

- Sun bed rental
- Windsurfing
- Water-skiing
- Scuba diving
- Sailing
- Jet Ski, Pedalo,
- Paragliding

For your evening

- Enjoy our 3 bars
- Live music, Big screen TV
- Live cabaret shows
- Theme nights
- Night Club...

Family Tropez 25m²

4 PERSONS 2 BEDROOMS SHOWER/WC



Equipments

- Air conditioning
- Fully equipped kitchen
- Oven
- Toaster
- Microwave
- Refrigerator
- Freezer
- Electric Kettle
- Coffee maker
- Nespresso coffee maker
- Iron & ironing board
- TV
- Shower and toilet
- Outside furniture & umbrella
- 2 sunbeds
- BBQs
- Wooden Terrass
- Slab terrace or wooden terrace

Bed size : single beds 80 x 190
double bed 140 x 190

PRICES per week

WEEK FROM - TO		PRICES IN €	WEEK FROM - TO		PRICES IN €
April	01 - 08 (14)	280	July	01 - 08 (27)	665
	08 - 15 (15)	280		08 - 15 (28)	1155
	15 - 22 (16)	280		15 - 22 (29)	1190
	22 - 29 (17)	280		22 - 29 (30)	1190
May	29 - 06 (18)	385	August	29 - 05 (31)	1470
	06 - 13 (19)h	525		05 - 12 (32)	1470
	13 - 20 (20)	490		12 - 19 (33)	1470
	20 - 27 (21)	525		19 - 26 (34)	1050
	27 - 03 (22)	490	26 - 02 (35)	700	
June	03 - 10 (23)	560	Sept	02 - 09 (36)	595
	10 - 17 (24)	560		09 - 16 (37)	455
	17 - 24 (25)	665		16 - 23 (38)	280
	24 - 01 (26)	665		23 - 30 (39)	210
				Oct	30 - 07 (40)
				07 - 15 (41)	210



Price HARLEY DAVIDSON 11/05 - 14/05

Minimum 3 nights..... 130€ per night

Exotique 2 25m²

4 PERSONS 2 BEDROOMS SHOWER/WC



PRICES per week

WEEK FROM - TO		PRICES IN €	WEEK FROM - TO		PRICES IN €
April	01 - 08 (14)	315	July	01 - 08 (27)	700
	08 - 15 (15)	315		08 - 15 (28)	1190
	15 - 22 (16)	315		15 - 22 (29)	1295
	22 - 29 (17)	315		22 - 29 (30)	1295
May	29 - 06 (18)	420	August	29 - 05 (31)	1505
	06 - 13 (19) ^h	560		05 - 12 (32)	1505
	13 - 20 (20)	525		12 - 19 (33)	1505
	20 - 27 (21)	525		19 - 26 (34)	1155
	27 - 03 (22)	490	26 - 02 (35)	770	
June	03 - 10 (23)	595	Sept	02 - 09 (36)	630
	10 - 17 (24)	595		09 - 16 (37)	490
	17 - 24 (25)	700		16 - 23 (38)	350
	24 - 01 (26)	700	23 - 30 (39)	245	
			Oct	30 - 07 (40)	245
				07 - 15 (41)	245

Equipments

- Air conditioning
- Fully equipped kitchen
- Oven
- Toaster
- Microwave
- Refrigerator
- Freezer
- Electric Kettle
- Coffee maker
- Nespresso coffee maker
- Iron & ironing board
- TV
- Shower and toilet
- Outside furniture & umbrella
- 2 sunbeds
- BBCs
- Wooden terrace
- Slab terrace

Bed size : single beds 80 x 190
double bed 140 x 190

Price HARLEY DAVIDSON 11/05 - 14/05

Minimum 3 nights..... 130€ per night



Lodge Confort 32m²

4 PERSONS 2 BEDROOMS SHOWER/WC



Equipments

- Air conditioning
- Fully equiped kitchen
- Oven
- Toaster
- Microwave
- Refrigerator
- Freezer
- Electric Kettle
- Coffee maker
- Nespresso coffee maker
- Iron & ironing board
- TV
- Shower and toilet
- Outside furniture & umbrella
- 2 sunbeds
- BBQs
- Wooden terrace
- Slab terrace

Bed size : single beds 80 x 190
double bed 140 x 190

PRICES per week

WEEK FROM - TO		PRICES IN €	WEEK FROM - TO		PRICES IN €
April	01 - 08 (14)	350	July	01 - 08 (27)	770
	08 - 15 (15)	350		08 - 15 (28)	1225
	15 - 22 (16)	350		15 - 22 (29)	1400
	22 - 29 (17) hd	350		22 - 29 (30)	1400
May	29 - 06 (18)	455	August	29 - 05 (31)	1575
	06 - 13 (19)	595		05 - 12 (32)	1575
	13 - 20 (20)	560		12 - 19 (33)	1575
	20 - 27 (21)	560		19 - 26 (34)	1225
	27 - 03 (22)	525		26 - 02 (35)	805
June	03 - 10 (23)	630	Sept	02 - 09 (36)	700
	10 - 17 (24)	630		09 - 16 (37)	595
	17 - 24 (25)	770		16 - 23 (38)	385
	24 - 01 (26)	770	23 - 30 (39)	280	
				Oct	30 - 07 (40)
				07 - 15 (41)	280



Price HARLEY DAVIDSON 11/05 -14/05

Minimum 3 nights 160€ per night

Exotique 2 plus 29m²

4 PERSONS 2 BEDROOMS SHOWER/WC



PRICES per week

WEEK FROM - TO		PRICES IN €	WEEK FROM - TO		PRICES IN €
April	01 - 08 (14)	385	July	01 - 08 (27)	805
	08 - 15 (15)	385		08 - 15 (28)	1295
	15 - 22 (16)	385		15 - 22 (29)	1645
	22 - 29 (17) hd	385		22 - 29 (30)	1645
May	29 - 06 (18)	490	August	29 - 05 (31)	1785
	06 - 13 (19)	630		05 - 12 (32)	1785
	13 - 20 (20)	560		12 - 19 (33)	1785
	20 - 27 (21)	595		19 - 26 (34)	1365
	27 - 03 (22)	560	26 - 02 (35)	840	
June	03 - 10 (23)	630	Sept	02 - 09 (36)	735
	10 - 17 (24)	665		09 - 16 (37)	665
	17 - 24 (25)	805		16 - 23 (38)	455
	24 - 01 (26)	805	23 - 30 (39)	315	
			Oct	30 - 07 (40)	315
				07 - 15 (41)	315

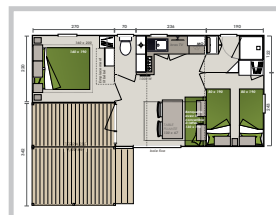
Equipments

- Air conditioning
- Fully equipped kitchen
- Oven
- Toaster
- Microwave
- Refrigerator
- Freezer
- Electric Kettle
- Coffee maker
- Nespresso coffee maker
- Iron & ironing board
- TV
- Shower and toilet
- Outside furniture
- 2 sunbeds
- BBQs
- Wooden terrace
- Slab terrace

Bed size : single beds 80 x 190
double bed 160 x 190

Price HARLEY DAVIDSON 11/05 - 14/05

Minimum 3 nights..... 160€ per night



Riviera Lodge 35m²

6 PERSONS 3 BEDROOMS 2 SHOWER/WC



Equipments

- Air conditioning
- Fully equiped kitchen
- Oven
- Toaster
- Microwave
- Refrigerator
- Freezer
- Electric Kettle
- Coffee maker
- Nespresso coffee maker
- Iron & ironing board
- TV
- Shower and toilet
- Outside furniture
- 2 sunbeds
- BBQs
- Wooden Terrace

Bed size : single beds 80 x 190
double bed 140 x 190

PRICES per week

WEEK FROM - TO		PRICES IN €	WEEK FROM - TO		PRICES IN €
April	01 - 08 (14)	420	July	01 - 08 (27)	840
	08 - 15 (15)	420		08 - 15 (28)	1365
	15 - 22 (16)	420		15 - 22 (29)	1750
	22 - 29 (17) hd	420		22 - 29 (30)	1750
May	29 - 06 (18)	525	August	29 - 05 (31)	1890
	06 - 13 (19)	700		05 - 12 (32)	1890
	13 - 20 (20)	595		12 - 19 (33)	1890
	20 - 27 (21)	665		19 - 26 (34)	1400
	27 - 03 (22)	630	26 - 02 (35)	910	
June	03 - 10 (23)	700	Sept	02 - 09 (36)	805
	10 - 17 (24)	735		09 - 16 (37)	700
	17 - 24 (25)	840		16 - 23 (38)	490
	24 - 01 (26)	840	23 - 30 (39)	350	
			Oct	30 - 07 (40)	350
				07 - 15 (41)	350



Price HARLEY DAVIDSON 11/05 -14/05

Minimum 3 nights 220€ per night

Exotique 3 32m²

6 PERSONS 3 BEDROOMS SHOWER/WC
WIFI



PRICES per week

	WEEK FROM - TO	PRICES IN €		WEEK FROM - TO	PRICES IN €
April	01 - 08 (14)	455	July	01 - 08 (27)	875
	08 - 15 (15)	455		08 - 15 (28)	1400
	15 - 22 (16)	455		15 - 22 (29)	1785
	22 - 29 (17) hd	455		22 - 29 (30)	1785
May	29 - 06 (18)	560	August	29 - 05 (31)	1960
	06 - 13 (19)	770		05 - 12 (32)	1960
	13 - 20 (20)	700		12 - 19 (33)	1960
	20 - 27 (21)	735		19 - 26 (34)	1505
	27 - 03 (22)	700	26 - 02 (35)	980	
June	03 - 10 (23)	770	Sept	02 - 09 (36)	840
	10 - 17 (24)	805		09 - 16 (37)	770
	17 - 24 (25)	875		16 - 23 (38)	560
	24 - 01 (26)	875	23 - 30 (39)	420	
			Oct	30 - 07 (40)	420
				07 - 15 (41)	420

Equipments

- Air conditioning
- Fully equipped kitchen
- Oven
- Toaster
- Microwave
- Refrigerator
- Freezer
- Electric Kettle
- Coffee maker
- Nespresso coffee maker
- Iron & ironing board
- TV
- Shower and toilet
- Outside furniture
- 2 sunbeds
- BBQs
- Wooden Terrace

Bed size : single beds 80 x 190
double bed 160 x 190



Price HARLEY DAVIDSON 11/05 - 14/05

Minimum 3 nights..... 220€ per night

**INVITES YOU TO DISCOVER THEIR
NEW CAMPING
BETWEEN CANNES AND GRASSE**



SPECIAL OFFERS

Discounts valid until 20th February :
5% discount for a deposit paid within 2 weeks
of making a reservation.

10% discount if the balance is paid by the 20th February.

10% discount for a 2 week reservation
from the 1st April until the 10th June
or from 16th September until the 15th October.

Over 65s only : Book 2 weeks from the 1st April
until the 10th June or from 16th September to the 15th October
and get the 3rd week free (cheapest week only).

Special month price for bookings in April, May,
from the 3rd June and from the 2nd September equivalent
of up to 30% discount.

Offers cannot be combined.
Offers may be applied after reservation.

Extras are not included in the discounts.

You can find details of our tariffs
in the reservation form on the last page.

MAP OF THE CAMPING

Prairies de la Mer

Votre n° mobil home :

- FAMILY TROPEZ
- LODGE CONFORT
- RIVIERA LODGE
- EXOTIQUE 2
- EXOTIQUE 2 PLUS
- EXOTIQUE 3



- 1** Reception - Business Center
- 2** Reception 24h/24
- 3** Salon de Coiffure - Riviera Bike Laverie - Supermarché
- 4** Le Petit Train
- 5** Presse Cadeaux - Ulu Watu Creperie - Long Bar - Pic Nic
- 6** Manège
- 7** Cabinet Médical
- 8** Poste de Secours
- 9** Riviera Water Sport
- 10** European Diving School Cabane Les Pieds dans l'eau

- 11** Les Pieds dans l'eau
- 12** Manava Plage
- 13** Le Sun
- 14** Conciergerie Ali Baba
- 15** Canopy
- 16** Babyland
- 17** Spa by Sarôme
- 18** Odyssey Supermarché - Laverie
- 19** Club Animation

MARCHES :
 Lundi : Ste-Maxime - Mardi : St Tropez - Mercredi : Cogolin, La Garde Freinet
 Jeudi : Grimaud, Port Grimaud - Vendredi : Ste-Maxime - Samedi : St Tropez
 Dimanche : Ramatuelle, Port Grimaud

ACTIVITIES TO DO IN THE AREA

Visits

Ferry crossing to Saint Tropez
«Gorge du Verdon», Monaco,
Nice & Cannes.

The local charming villages
(Saint Maxime, Gassin,
Port-grimaud, Saint Tropez...)

Isles «du Levant» (Port-Cros,
Porquerolles) nature reserves.

Marine land

Wine tasting



Leisure Time

Relax on the Beach

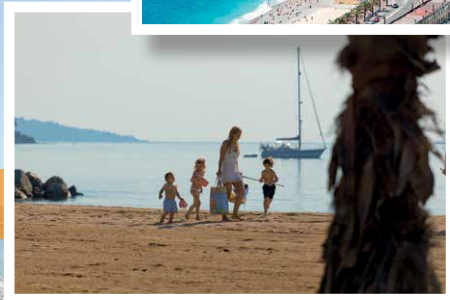
Water parks

(Sainte Maxime, Frejus)

Luna Parc, fun fare.

Bowling

Mini Golf



Sports

Go-Karting

Golf

Water sports

Paintball



HOW TO FIND US ?



Coordonnées GPS Latitude 43.2806° / 43°16.83'N 6.5820° / 6° 34.92'E

By car :

When driving from Nice on the A8, take the exit number 36 «LE MUY» follow the direction Sainte Maxime then upon arrival in Sainte Maxime follow Saint Tropez. After about 7/8 km Sainte Maxime you will come up to a big round about take the 3rd exit drive into Camping Prairies de la Mer and ask for the reception of DS ONE VACANCES

When driving from Aix en Provence you can take exit n° 36 as above or the exit number 13 «Le Luc» follow the signs to Saint Tropez you will find the road very windy but you will save some time on your journey (no traffic) you drive threw villages Garde Freinet then Grimaud after grimaud follow the signs showing Port Grimaud look for camping Prairies de la Mer and ask for the reception of DS ONE VACANCES.

By plane :

The airport of Nice is 1H20 minutes drive to DS ONE VACANCES.

The airport of Toulon is 55 minutes drive to DS ONE VACANCES.

We can organise a pick up service for our guests from both the airports for discounted rates for Nice and Toulon.

Our office is situated at the emplacement n°1761 on the camping Les Prairies de la Mer