



Golfe de Saint-Tropez **bj riviera**  holidays



# DS ONE VACANCES



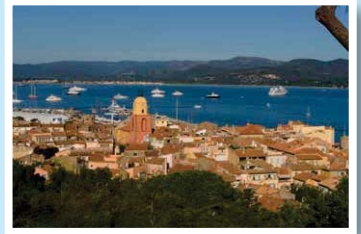
**New!!**

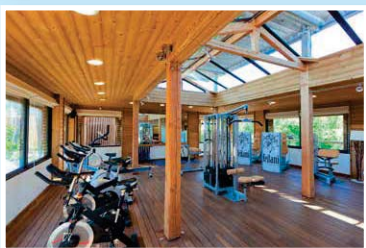
**DS ONE VACANCES** - BP 10135 - 83314 Grimaud CEDEX  
Tel. : +33 (0)4 94 45 47 18 - e-mail : [prairiesdelamer@dsonovacances.com](mailto:prairiesdelamer@dsonovacances.com)  
[www.dsonovacances.com](http://www.dsonovacances.com)

# Camping Prairies de la Mer

Our Mobile homes are located on Prairies de la Mer, one of the premier camping parks of the Cote d'Azur in the heart of the bay of Saint Tropez. Only a stroll away from the beautiful Port Grimaud, The Riviera's little Venice.

Let yourself be tempted by a stay in the south of France on a beachside camp site. All the team at DS One Vacances look forward to greeting you under the sun of Port Grimaud.





## Village dedicated to your holiday experience...

### Facilities on site

- 2 Supermarkets
- Bakers
- Laundry
- Newsagents
- Carrousel
- Mini fair ground
- Ice cream parlours
- Mini markets
- Hairdressers
- Excursions office
- Restaurants
- Fast food services for all tastes
- Spa

### Activites for all the family

- Archery
- Beach volleyball
- Gym Aquagym
- Table tennis
- Tennis courts
- Mini tournaments
- Kids club
- Scooters & Bicyclesto rent
- Football pitch
- Fitness room
- Introduction to horseback riding

### From the beach

- Sun bed rental
- Windsurfing
- Water-skiing
- Scuba diving
- Sailing
- Jet Ski, Pedalo,
- Paragliding

### For your evening

- Enjoy our 3 bars
- Live music, Big screen TV
- Live cabaret shows
- Theme nights
- Night Club...

NEW: SWIMMING POOL

# Family Tropez 25m<sup>2</sup>

4 PERSONS 2 BEDROOMS SHOWER/WC



## Equipments

- Air conditioning ✓
- Fully equipped kitchen ✓
- Microwave ✓
- Refrigerator ✓
- Freezer ✓
- Electric Kettle ✓
- Coffee maker ✓
- TV ✓
- Shower and toilet ✓
- Outside furniture & umbrella ✓
- 2 sunbeds ✓
- Gas Plancha ✓
- Slab terrace or wooden terrace ✓



Bed size : single beds 80 x 190  
double bed 140 x 190

Price **HARLEY DAVIDSON**

Minimum 3 nights.....130 € per night

Price **WEEKEND ASCENSION**

Minimum 3 nights .....90 € per night

Price **WEEKEND PENTECÔTE**

Minimum 2 nights .....90 € per night



# Exotique 2 25m<sup>2</sup>

4 PERSONS 2 BEDROOMS SHOWER/WC



## Equipments

- Air conditioning
- Fully equipped kitchen
- Microwave
- Refrigerator
- Freezer
- Electric Kettle
- Coffee maker
- TV
- Shower and toilet
- Outside furniture & umbrella
- 2 sunbeds
- Gas Plancha
- Wooden terrace

Bed size : single beds 80 x 190  
double bed 140 x 190

### Price HARLEY DAVIDSON

Minimum 3 nights.....130 € per night

### Price WEEKEND ASCENSION

Minimum 3 nights .....100 € per night

### Price WEEKEND PENTECÔTE

Minimum 2 nights .....100 € per night



# Lodge Confort 32m<sup>2</sup>

4 PERSONS 2 BEDROOMS SHOWER/WC



## Equipments

- Air conditioning
- Fully equiped kitchen
- Microwave
- Refrigerator
- Freezer
- Electric Kettle
- Coffee maker
- Nespresso Machine
- TV
- Shower and toilet
- Outside furniture & umbrella
- 2 sunbeds
- Gas Plancha
- Wooden Terrace



Bed size : single beds 80 x 190  
double bed 140 x 190



Price **HARLEY DAVIDSON**

Minimum 3 nights.....160 € per night

Price **WEEKEND ASCENSION**

Minimum 3 nights .....110 € per night

Price **WEEKEND PENTECÔTE**

Minimum 2 nights .....110 € per night

# Exotique 2 plus 29m<sup>2</sup>

4 PERSONS 2 BEDROOMS SHOWER/WC



## Equipments

- Air conditioning
- Fully equipped kitchen
- Microwave
- Refrigerator
- Freezer
- Washing Machine
- Electric Kettle
- Coffee maker
- Nespresso Machine
- TV
- Shower and toilet
- Outside furniture & umbrella
- 2 sunbeds
- Gas Plancha
- Wooden terrace
- Wi-Fi

Bed size : single beds 80 x 190  
double bed 160 x 190

### Price HARLEY DAVIDSON

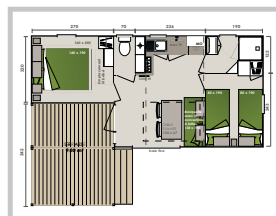
Minimum 3 nights.....160 € per night

### Price WEEKEND ASCENSION

Minimum 3 nights .....120 € per night

### Price WEEKEND PENTECÔTE

Minimum 2 nights .....120 € per night



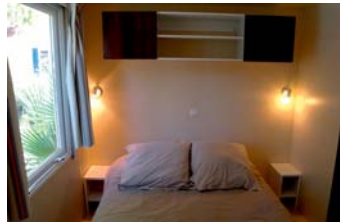
# Riviera Lodge 35m<sup>2</sup>

6 PERSONS 3 BEDROOMS SHOWER/WC



## Equipments

- Air conditioning
- Fully equiped kitchen
- Microwave
- Refrigerator
- Freezer
- Electric Kettle
- Coffee maker
- Nespresso coffee maker
- TV
- Shower and toilet
- Outside furniture & umbrella
- 2 sunbeds
- Gas Plancha
- Wooden Terrace



Bed size : single beds 80 x 190  
double bed 140 x 190



## Price HARLEY DAVIDSON

Minimum 3 nights.....220 € per night

## Price WEEKEND ASCENSION

Minimum 3 nights .....140 € per night

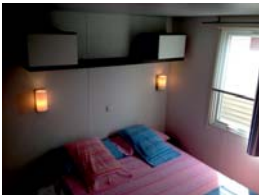
## Price WEEKEND PENTECÔTE

Minimum 2 nights .....140 € per night



# Exotique 3 32m<sup>2</sup>

6 PERSONS 3 BEDROOMS SHOWER/WC



## Equipments

- Air conditioning ✓
- Fully equipped kitchen ✓
- Microwave ✓
- Refrigerator ✓
- Freezer ✓
- Washing Machine ✓
- Electric Kettle ✓
- Coffee maker ✓
- Nespresso Machine ✓
- TV ✓
- Shower and toilet ✓
- Outside furniture & umbrella ✓
- 2 sunbeds ✓
- Gas Plancha ✓
- Wooden terrace ✓
- Wi-Fi ✓

Bed size : single beds 80 x 190  
double bed 160 x 190

### Price HARLEY DAVIDSON

Minimum 3 nights.....220 € per night

### Price WEEKEND ASCENSION

Minimum 3 nights .....150 € per night

### Price WEEKEND PENTECÔTE

Minimum 2 nights .....150 € per night



**DSONE VACANCES INVITES YOU TO DISCOVER THEIR**  
**NEW CAMPING**  
**BETWEEN CANNES AND GRASSE**



[www.parcdesmonges.com](http://www.parcdesmonges.com) +33 (0)4 93 60 91 71



# SPECIAL OFFERS

**STAYS FROM THE OPENING OF THE CAMPSITE UNTIL THE END OF JUNE AND FROM THE MIDDLE OF SEPTEMBER UNTIL THE CLOSING OF THE CAMPSITE CAN ENJOY THE FOLLOWING DISCOUNTS:**

**10% DISCOUNT**

for a minimum 7 nights booking.

+65 Years old : for a 2 week reservation we offer the third week free (less expensive week).

**STAYS FROM BEGINING OF JULY UNTIL MIDDLE OF SEPTEMBER**

Until the 20th February, enjoy a 5% DISCOUNT when paying the deposit within two weeks.

Enjoy a total of 10% discount if the balance is paid before the 20th February.

**SPECIAL MONTHLY** price in April, May , June and September, up to DISCOUNTS OF 30%. Offers are not cumulative and will be applied also after reservations online.

Discounts are not applied on extras such as sheets, towels, end of cleaning or cancellation insurance.

For more details about our accommodations and prices, you can visit our website

[www.dsonevacances.com](http://www.dsonevacances.com)

or join us by email

[prairiesdelamer@dsonevacances.com](mailto:prairiesdelamer@dsonevacances.com)

or by phone on

0033 494 454 718.



Like our Facebook page to get updates on special internet discounts.

# MAP OF THE CAMPING



**DS ONE  
VACANCES**



bj riviera holidays

## Prairies de la Mer

- FAMILY TROPEZ
- LODGE CONFORT
- RIVIERA LODGE
- EXOTIQUE 2
- EXOTIQUE 2 PLUS
- EXOTIQUE 3



- |  |  |
|--|--|
| <b>1</b> Reception Business Center                               | <b>11</b> Les Pieds dans l'eau           |
| <b>2</b> Reception 24h/24  | <b>12</b> Manava Plage                   |
| <b>3</b> Salon de Coiffure - Riviera Bike Laverie - Supermarché  | <b>13</b> Le Sun                         |
| <b>4</b> Le Petit Train  | <b>14</b> Conciergerie Ali Baba          |
| <b>5</b> Presse Cadeaux - Ulu Watu Creperie - Long Bar - Pic Nic | <b>15</b> Canopy                         |
| <b>6</b> Manège  | <b>16</b> Babyland                       |
| <b>7</b> Cabinet Médical   | <b>17</b> Spa by Sarôme                  |
| <b>8</b> Poste de Secours  | <b>18</b> Odlessey Supermarché - Laverie |
| <b>9</b> Riviera Water Sport                                     | <b>19</b> Club Animation                 |
| <b>10</b> European Diving School Cabane Les Pieds dans l'eau     | <b>20</b> Parking Bus                    |

**Markets :**  
**Monday : Ste-Maxime - Tuesday : St Tropez**  
**Wednesday : Cogolin, La Garde Freinet**  
**Thursday : Grimaud, Port Grimaud**  
**Friday : Ste-Maxime - Saturday : St Tropez**  
**Sunday : Ramatuelle, Port Grimaud**

# ACTIVITIES TO DO IN THE AREA

## Visits

Ferry crossing to Saint Tropez  
«Gorge du Verdon», Monaco,  
Nice & Cannes.

The local charming villages  
(Saint Maxime, Gassin,  
Port-grimaud, Saint Tropez...)  
Isles «du Levant» (Port-Cros,  
Porquerolles) nature reserves.

Marine land  
Wine tasting



## Leisure Time

Relax on the Beach  
Water parks  
(Sainte Maxime, Frejus)  
Luna Parc, fun fare.  
Bowling  
Mini Golf



## Sport

Go-Karting  
Golf  
Water sports  
Paintball



# HOW TO FIND US?



**Coordonnées GPS Latitude 43.2806° / 43°16.83'N 6.5820° / 6° 34.92'E**

## By car

When driving from Nice on the A8, take the exit number 36 «LE MUY» follow the direction Sainte Maxime then upon arrival in Sainte Maxime follow Saint Tropez.

After about 7/8 km Sainte Maxime you will come up to a big round about take the 3rd exit drive into Camping Prairies de la Mer and ask for the reception of DS ONE VACANCES.

When driving from Aix en Provence you can take exit n° 36 as above or the exit number 13 «Le Luc» follow the signs to Saint Tropez you will find the road very windy but you will save some time on your journey (no traffic) you drive threw villages Garde Freinet then Grimaud after grimaud follow the signs showing Port Grimaud look for camping Prairies de la Mer and ask for the reception of DS ONE VACANCES.

## By plane

The airport of Nice is 1H20 minutes drive to DS ONE VACANCES.

The airport of Toulon is 55 minutes drive to DS ONE VACANCES.

We can organise a pick up service for our guests from both the airports for discounted rates for Nice and Toulon.